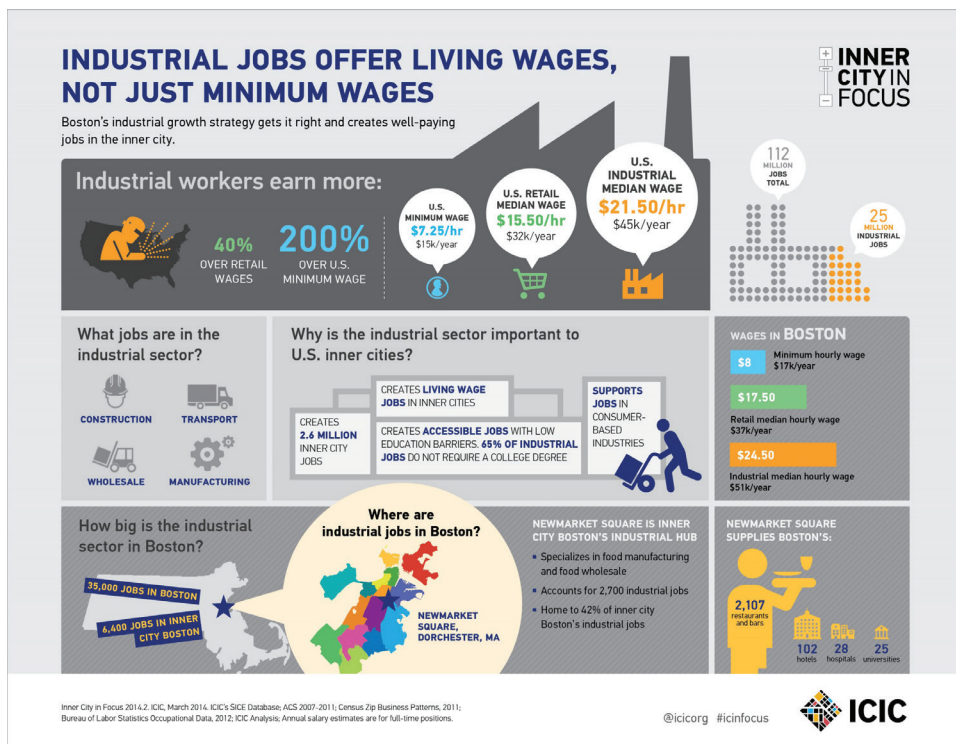


SBE News Alert

Industrial jobs offer living wages with low barriers for inner city residents



While industrial jobs have the potential to increase wages for inner city residents and bolster local economies, employment in many of these sectors has experienced a decades-long decline. A successful economic development strategy to reverse this trend can be found in Boston.

Boston saw a major decline in industrial jobs as it transitioned to a knowledge-based economy. Profitable industrial businesses left the city because of rising real

Continued on page 3

SMALL BUSINESS EXCHANGE

SBE OUTREACH SERVICES

With 1.5 million businesses in our database, SBE is California's #1 source for diversity outreach.

Advertisements

Placed in the Small Business Exchange newspaper, SBE Today newsletter, and online at www.sbeinc.com

Faxed and Eblast Solicitations

Targeted mailings sent to businesses per your criteria.

Telemarketing

Telephone follow-up calls that follow a script of 5 questions you create.

Computer Generated Reports

Will fit right into your proposal, along with a list of interested firms to contact.

Contact Info:

703 Market Street, Suite 1000

San Francisco, CA 94103

Email: sbe@sbeinc.com

Website: www.sbeinc.com

Phone: (415) 778-6250, (800) 800-8534

Fax: (415) 778-6255

Publisher of

Small Business Exchange
 weekly newspaper

Income inequality has dominated political discussions in recent weeks, with efforts to raise the federal minimum wage gaining momentum. America's inner cities, with 2 million unemployed and nearly 10 million individuals living in poverty, will be impacted by these discussions. While federal policies are focusing on setting a minimum wage standard, are there local strategies that can be implemented to create new living wage opportunities?

There is no universal answer to this question, but one promising strategy may be supporting industrial business growth. We define industrial businesses as those in the manufacturing, construction, transportation, and wholesale sectors. Focusing on industrial growth has the potential to create well-paying jobs that are accessible to a

diverse workforce. Data from the U.S. Census Bureau shows that the median annual full-time salary for industrial jobs is \$45,000, which is a 200% increase over minimum wage and a 40% increase over median retail wages.

These jobs are not only higher paying, but also have lower education barriers. Sixty-five percent of construction, production, and transportation occupations do not require college educations, compared to 34% for all occupations¹. This data is encouraging for the inner city workforce, where only 15% of people between the ages of 25 and 64 have a college degree and the median household income is just \$30,000². In addition, industrial jobs support many other sectors of the economy, such as retail, healthcare, education, hospitality, and tourism.

BIDDING OPPORTUNITIES

F.W. Spencer & Son, Inc.

Requests subcontractor bids from all Certified MBE/WBE/OBE/SBE/LBE/DVBE subcontractors, material suppliers, and truckers for Contra Costa County Public Works Dept., 255 Glacier Drive, Martinez, CA 94553

Project: Boiler Replacement

Address: 651 Pine St., Martinez, CA 94553

Bid Due Date: April 15, 2014 at 2:00pm

Job No.: 212016.00 -

Authorization No.: WH195B

Project Engineers Estimated Value: \$722,000

Trades needed (Include but not necessarily limited to): Controls, Testing and Air Balancing, Electrical, Crane & Rigging, Concrete, Demolition, Painting, Fire Protection, Seismic Bracing, Insulation, HVAC (flue piping), and Abatement, Suppliers, Manufacturers.

We offer assistance in obtaining information related to bonds and insurance. Plans, specifications and requirements for the project are available for review at our office or at the Contra Costa County Public Works Department located at 255 Glacier Drive, Martinez, CA 94553. They are also available for purchase online at www.cccounty.us/pwprojects.

Please Contact

Trevor Newkirk or Larry Moughler at:

FW Spencer & Son, Inc.

99 S. Hill Dr., Brisbane, CA 94005

Phone: (415) 468-5000 - Fax: (415) 468-4579

Requesting Sub-bids from Qualified SBE/DVBE/MBE/WBE/OBE Subcontractors for:

Project Name: Barren Ridge Renewable Transmission Project
Los Angeles Department of Water & Power
Bid No. 90188

Bid Deadline: April 15, 2014

For information on the availability of plans and specifications and the bidder's policy concerning assistance to subcontractors in obtaining bonds, lines of credit and/or insurance, please contact our office.

Blattner Energy, Inc.

Contact: Elodie Worm

392 County Road 50, Avon, MN 56310

(320) 356-2371 • Fax: (320) 356-7392

barrenridge@blattnerenergy.com

Section 3 / MBE/WBE/DBE Subcontractors/Suppliers Notice of Bids Request

**Project: Cabrillo Gateway - 80 Unit,
 3 Story Affordable Residential Apartment Building Over One Level of Parking Garage**
**Location: 2000 San Gabriel Ave,
 Long Beach, CA 90810**

Walton Construction Services plans to receive bids in "Good Faith" with Section 3, Local Long Beach or MBE/WBE/DBE firms for participation in the Cabrillo Gateway Housing Project. Certified firms must provide a copy of their current Section 3, M/W/DBE certification issued by the City of Long Beach, City of Los Angeles, Metro or Caltrans. This project is a Davis Bacon prevailing wage job. For information regarding plans and specs, firms can contact Tim Norris by email at tnorris@waltoncs.com.

The following trades are scheduled to bid on April 19, 2014:

Rough Carpentry, Finish Carpentry, Siding, Masonry, HVAC, Cleanup, Insulation, Glazing, Sheet Metal, Roofing, Plaster, Drywall, Painting, Cabinets, Ceramic Tile, Carpet, Landscape. Walton Construction Services is an equal opportunity employer that is committed to, and encourages participation of Local, Section 3, MBE/WBE/DBE subcontractors/suppliers on the Cabrillo Gateway Housing Project.

Walton

Construction Services

358 East Foothill Blvd. • San Dimas CA 91773

Phone: (909) 267-7777 • Fax: (909) 267-7772

We are An Equal Opportunity Employer

REQUEST FOR DBE SUBCONTRACTORS AND SUPPLIERS FOR:

**Hwy 101 Reconstruct Overcrossing, Retaining Walls,
 Ground Improvement - Burlingame**
Caltrans #04-235844

BID DATE: April 15, 2014 @ 2:00 PM

O. C. Jones & Sons, Inc. is soliciting quotes (including but not limited to):

Trucking, Lead Compliance Plan, Construction Area Signs, Portable Changeable Message Sign, SWPPP, Rain Event Action Plan, Storm Water Sampling & Analysis, Temporary Erosion Control, Sweeping, Dewatering and Non Storm Water Discharge System, Water Quality Sampling and Analysis, Temporary Fence, ADL Burial Location Report, Treated Wood Waste, Adjust Utilities, Cold Plane AC, Cap Inlet, Bridge Removal, Clearing & Grubbing, Develop Water Supply, Roadway Excavation (Type Z-3 ADL) (Type Y-1 ADL), (Type Y-2 ADL), Previous Backfill Material, Imported Borrow, Lightweight Embankment Material (Cellular Concrete), Subgrade Enhancement Geotextile Class B-2, Soil-Cement Ground Improvements, Weed Germination, Soil Amendment, Planting & Irrigation, Imported Topsoil, Hydroseed, Compost, Lime Stabilized Soil, Lean Concrete Base, Slurry Seal, Data Core, Tack Coat, Biofiltration Soil, Jointed Plain Concrete, Mechanically Stabilized Embankment, Temporary Shoring, Minor Concrete, Sign Structure, Roadside Signs, Prepare & Paint Concrete, Rock Slope Protection, Automatic Drainage Gate, Fencing, Delineator, Object Marker, Midwest Guardrail System, Wildlife Passage Way, Tubular Handrailing, Crash Cushion Type SCI-100GM, Striping & Marking, Electrical - Signals & Lighting, Stone Veneer, Ornamental Railing, CA-ST-10 Bridge Rail, Metal Lettering, Metal Bands, Precast Concrete Letters, Preparing Grinding, Inertial Profiler, Grated Line Drain, and Construction Materials

Contact: Jean Sicard @ O.C. Jones 510-526-3424 Fax 510-526-0990

Disney Construction, Inc. is soliciting quotes for (including but not limited to):

Asbestos Compliance Plan, Noise Monitoring, CIDH Concrete Piling, Prestressing Precast Girder, Precast Prestressed Concrete Girder, Joint Seal, Corbel Cap, Rebar, Bar Reinforcing Steel, Pipe Jacking, Misc. Iron and Steel, Concrete Barrier, Furnish Pile, Drive Pile, Cast-In-Steel Shell Concrete Pile

Contact: Rick Disney @ Disney Construction 650-259-9545 Fax 650-259-9651

O. C. Jones & Sons and Disney Construction, A Joint Venture

1520 Fourth Street • Berkeley, CA 94710

An Equal Opportunity Employer

100% Performance & Payment Bonds may be required. Worker's Compensation Waiver of Subrogation required. Please call OCJ/Disney Construction for assistance with bonding, insurance, necessary equipment, material and/or supplies. OCJ/Disney Construction is willing to breakout any portion of work to encourage DBE Participation. Plans & Specs are available for viewing at both offices or through the Caltrans Website at www.dot.ca.gov/hq/esc/oe/weekly_ads/index.php



BIDDING OPPORTUNITIES

Gallagher & Burk, Inc. is soliciting for DBEs for the following project:
**MAIN WASTEWATER TREATMENT PLANT
 ENGINEERS ROAD WIDENING (Divisions 00-01),
 Specification SD-357**
**OWNER: EAST BAY MUNICIPAL UTILITY
 DISTRICT – 375 11TH Street, Oakland**
BID DATE: April 16, 2014 @ 1:30 P.M

We hereby encourage responsible participation of local White Men, White Women/Minority Business Enterprises, and solicit their subcontractor or materials and/or suppliers quotation for the following types of work including but not limited to:

COLD PLANE, CONSTRUCTION AREA SIGN, FENCING, STRIPING, SURVEY/STAKING, UNDERGROUND, TRUCKING, WATER TRUCKS, STREET SWEEPING, MINOR CONCRETE AND ELECTRICAL

100% Performance and Payment Bonds may be required for full amounts of the subcontract price. Surety company will have to be approved by Gallagher & Burk, Inc.. Gallagher & Burk, Inc. will pay bond premium up to 2%. Subcontractors must possess current insurance and worker's compensation coverage meeting Gallagher & Burk, Inc. requirements. Please call if you need assistance in obtaining bonding, insurance, equipment, materials and/or supplies. Plans and specifications are available for review at our Dublin office.

Gallagher & Burk, Inc.

344 High Street • Oakland, CA 94601
 Phone: (510) 261-0466 • FAX (510) 261-0478
Estimator: Anita Sahagun
 Website: www.desilvagates.com
An Equal Opportunity Employer

REQUEST FOR MBE/WBE/SBE Subcontractors and Suppliers for:

**Main Wastewater Treatment Plant
 Engineers Road Widening
 Specification SD-357
 East Bay Municipal Utility District
 BID DATE: April 16, 2014 @ 1:30 PM**

We are soliciting quotes for (including but not limited to): Trucking, Construction Staking, Waterline, Fencing, Striping, Signs, Minor Concrete Curb & Gutter, Street Lighting - Electrical and Construction Materials

O.C. Jones & Sons, Inc.

1520 Fourth Street • Berkeley, CA 94710 • Phone: 510-526-3424 • FAX: 510-526-0990
Contact: Dan Palmer
An Equal Opportunity Employer

100% Performance & Payment Bonds may be required. Worker's Compensation Waiver of Subrogation required. Please call OCJ for assistance with bonding, insurance, necessary equipment, material and/or supplies. OCJ is willing to breakout any portion of work to encourage MBE/WBE/SBE participation. Plans & Specs are available for viewing at our office.

REQUEST FOR DVBE & LBE Subcontractors and Suppliers for:

**Pinole Middle School Soccer & Football Fields
 Bid #2121102-06
 West Contra Costa Unified School District
 BID DATE: April 15, 2014 @ 2:00 PM**

We are soliciting quotes for (including but not limited to): Trucking, Install Pavement Reinforcing Fabric, Tennis Court Acrylic Surfacing System and Court Striping, Trucking, Slotted Drain Materials and Construction Materials

O.C. Jones & Sons, Inc.

1520 Fourth Street • Berkeley, CA 94710 • Phone: 510-526-3424 • FAX: 510-526-0990
Contact: Mike Crowley
An Equal Opportunity Employer

100% Performance & Payment Bonds may be required. Worker's Compensation Waiver of Subrogation required. Please call OCJ for assistance with bonding, insurance, necessary equipment, material and/or supplies. OCJ is willing to breakout any portion of work to encourage DVBE & LBE participation. Plans & Specs are available for viewing at our office.

Industrial jobs offer living wages

Continued from page 1

estate values, inadequate space, and frustration with city bureaucracy. To improve the business climate for industrial businesses, then-mayor Thomas Menino launched the Back Streets Program in 2001, with the help of ICIC and the Boston Consulting Group. The four basic premises of the program are to:

1. Protect and create industrial land through planning and zoning;
2. Assist individual businesses with navigating through the city's resources, permitting processes, and regulations;
3. Connect businesses with workforce training and development programs; and
4. Provide financial assistance to individual businesses for capital investments and expansion.

Newmarket Square, Boston's inner city industrial hub located in Dorchester, greatly benefits from the city's renewed interest in industrial businesses. The

60-acre industrial district contains Boston's largest cluster of food manufacturing, processing, and wholesale businesses. The surrounding area is home to over 140 industrial businesses and 2,700 jobs. As a major food supplier to Boston's 2,107 restaurants, 102 hotels, 28 hospitals, and 25 universities, it is a critical backbone to the city's economy. These food-related businesses thrive in Boston's inner city because of their proximity to downtown customers, relatively cheaper rent, favorable zoning regulations, and access to trucking, sea, and air transport. According to the Boston Redevelopment Authority, the Boston Back Streets program assisted over 90 companies in Newmarket Square last year, resulting in the creation or retention of more than 700 jobs. In addition to the Back Streets program, the area also benefited from investments in public transportation with the recent expansion of the MBTA's Fairmount Line in Dorchester.

Other cities, such as New York City, understand the potential impact of industrial jobs to address rising inequality and are looking to expand their industrial corridors. At ICIC, we would caution cities against adopting an industrial growth strategy purely based on the promise of higher-paying

jobs. An industrial growth strategy is not appropriate for all cities. Each city must carefully consider their unique competitive advantages in the context of economic trends. For those cities where this is the right strategy, we suggest they look to Boston for insight. Industrial businesses are able to prosper in Boston because they benefit from competitive advantages in Boston's inner city, such as favorable zoning and convenient access to transportation infrastructure. Importantly, Boston's industrial businesses also complement the city's larger industries, making them critical to the local economy.

Boston has shown that cities have the potential to address income inequality not just through minimum wage increases, but also by attracting profitable industrial businesses to low-income and disadvantaged neighborhoods. An industrial growth strategy may not work in every city, but the data shows that industrial businesses have the potential to increase income for many inner city residents.

Source: © 2014 Initiative for a Competitive Inner City.

Public Legal Notices

CALIFORNIA STATE UNIVERSITY STANISLAUS

CENTRAL PLANT COOLING TOWER REPLACEMENT, PROJECT NUMBER 8408 CSU STANISLAUS ONE UNIVERSITY CIRCLE TURLOCK, CA 95382

The Trustees of the California State University will receive sealed bid proposals in room MSR290 at the above address, for furnishing all labor and materials for construction of the Central Plant Cooling Tower Replacement **Project Number 8408**, for the CSU Stanislaus, campus.

Proposals will be received in the above-mentioned room until 2:00 p.m. on May 1, 2014 in accordance with the contract documents, at which time the proposals will be publicly opened and read.

In general, the work consists of replacing a cooling tower in accordance with the plans and specifications prepared by P2S Engineering, telephone: (818) 585-1796. Plans and specifications may be seen at the office of the University and Plan Rooms. Engineer's construction estimate is \$830,000.

Plans and specifications will be available for review and purchase after April 10th by requesting them from ARC by going to www.e-ARC.com/ca/modesto then clicking on "Public Planroom" or by calling the ARC Modesto location at, (209) 524-2924 asking for the PlanWell Department. Plans and specifications cost approximately \$100.00 per set plus tax and shipping payable to ARC and are non-refundable.

Each bidder offering a proposal must comply with bidding provisions of Article 2.00 et seq. of the Contract General Conditions. The bidder should familiarize himself with all the provisions of the Contract General Conditions and Supplementary General Conditions, especially Article 2.02, regarding the necessity to prequalify with the Trustees ten (10) business days prior to the bid date.

Bidders must be prequalified with the Trustees. Prequalification of Prospective Bidders, Form 703.11 can be downloaded from the internet at http://www.calstate.edu/cpcd/cm/contractor_prequal_bidders.shtml.

This project is a public works project and is subject to prevailing wage rate laws (see Contract General Conditions, Article 4.02-c).

A mandatory pre-bid walkthrough has been scheduled for Thursday, April 17, 2014 at 10:00 am. Interested bidders should assemble at the Mary Stuart Rogers Building, conference room MSR130 on the campus.

The Trustees require the successful bidder to achieve three percent (3%) DVBE participation in contracting construction projects as established in the bidding documents, and this must occur prior to the bid opening.

It will be the responsibility of each bidder to obtain a bid proposal package in sufficient time to fulfill requirements therein. Bid proposal packages are obtainable only by **prequalified** contractors, licensed in the State of California with an C20 license, and the bid packages must be requested from the Trustees, located at CSU Stanislaus, One University Circle, Turlock CA 95382; Attention: Debbie DaRosa, (209) 667-3987.

CITY & COUNTY OF SAN FRANCISCO DEPARTMENT OF PUBLIC WORKS

REQUEST FOR PROPOSALS DESIGN AND ENVIRONMENTAL SERVICES FOR THE ISLAIS CREEK BRIDGE REHABILITATION PROJECT CONTRACT NO. FPE14087 (Federally Funded Project)

The Department of Public Works (DPW), City and County of San Francisco (City) announces a Request for Proposals (RFP) for design and environmental services for the Islais Creek Bridge Rehabilitation Project.

Proposals will be received at 30 Van Ness Avenue, 5th Floor, San Francisco, California until **2:30 P.M. Pacific Time, April 29, 2014**. Consultants shall submit Proposals as required in the RFP package. Late submittals will not be considered. Digital files of the RFP Package may be downloaded at no cost at: www.sfdpw.org/biddocs. Notices regarding Addenda and other proposal changes will be distributed by email to Plan Holders. Additional information is available from the DPW's Contracts, Bid Opportunities and Payments webpage at: www.sfdpw.org.

DPW is seeking a qualified team of engineers and environmental planners ("Consulting Team"), led by a "Prime Consultant" to provide all services required to perform engineering evaluations, environmental studies, engineering design, and engineering construction support for the Islais Creek Bridge Rehabilitation Project. The goal of this RFP is to award a contract to one consultant who will be selected from the respondents of this RFP. The selected Consultant will consist of a Prime Consultant and specialty subconsultants to accomplish the scope of work. The total contract amount may

not exceed \$5,000,000 and the scope of work shall be completed over approximately 5 years.

Certified Disadvantaged Business Enterprise (DBE) firms are encouraged to submit proposals. The DBE Subconsultant participation goal is **18%**. Call Selormey Dzikunu at 415-558-4059 for details. In accordance with Chapters 9 and 10 of the Local Assistance Procedures Manual (LAPM) requirements, all Proposers shall submit documented good faith efforts with their proposals and must achieve 80 out of 100 points to be deemed responsive. Refer to Exhibit 10-I from the LAPM website for more details.

Contracts will only be awarded to a consultant with an adequate financial management and accounting system as required by 48 Code of Federal Regulations (CFR) Part 16.301-3, 49 CFR Part 18, and 48 CFR Part 31.

A pre-proposal conference will be held on **April 15, 2014 at 2:30 P.M.** at the Main Conference Room, 30 Van Ness Avenue, 5th Floor, San Francisco, California.

Questions regarding the RFP must be submitted by **5:00 P.M. on April 22, 2014**, by email to the Contract Manager at: Raymond.Lui@sfdpw.org

In accordance with San Francisco Administrative Code Chapter 6, no proposal is accepted and no contract in excess of \$400,000 is awarded by the City and County of San Francisco until such time as (a) the Mayor or the Mayor's designee approves the contract for award and (b) the Director of Public Works then issues an order of award. Pursuant to Charter Section 3.105, all contract awards are subject to certification by the Controller as to the availability of funds.

4/3/14

CNS-2605756#

SMALL BUSINESS EXCHANGE

UNIVERSITY OF CALIFORNIA SANTA CRUZ

ADVERTISEMENT FOR BIDS

Subject to conditions prescribed by the University of California, Santa Cruz, sealed bids for a lump-sum contract are invited for the following work:

Modular Student Housing Village – Re-Roof 2014 Project Number: 3406-014.

Description of Work: Reroof Seven Units at the Village

Procedures: Bidding documents will be available at 1:00, Monday, April 7, 2014, at ucseplanroom.com for review and free downloading.

Bidders must attend a **mandatory** pre-bid conference at **Tuesday, April 8, 2014 at 10:00 AM** in the PP&C Conference Room.

Bids will be received only at: PHYSICAL PLANNING AND CONSTRUCTION, CONTRACTS OFFICE, UNIVERSITY OF CALIFORNIA, SANTA CRUZ, 1156 HIGH STREET, SANTA CRUZ, CA 95064, Bid Deadline: **Sealed bids must be received on or before 3:00 PM, Tuesday, April 22, 2014.**

The successful Bidder will be required to have the following California current and active contractor's license at the time of submission of the Bid: **GENERAL BUILDING CONTRACTOR - B**,

Every effort will be made to ensure that all persons have equal access to contracts and other business opportunities with the University within the limits imposed by law or University policy. Each Bidder may be required to show evidence of its equal employment opportunity policy. The successful Bidder and its subcontractors will be required to follow the nondiscrimination requirements set forth in the Bidding Documents and to pay prevailing wage at the location of the work.

The work described in the contract is a public work subject to section 1771 of the California Labor Code.

Estimated construction cost: \$ 130,000

THE REGENTS OF THE UNIVERSITY OF CALIFORNIA

University of California, Santa Cruz
March 2014

BIDDING OPPORTUNITIES

Requests proposals/quotes from all qualified and certified SBE/MBE/WBE/DBE subcontractors, suppliers, and truckers for the following project:

**BART EARTHQUAKE SAFETY PROGRAM
SEIMIC RETROFIT, MISCELLANEOUS STRUCTURES**
Concord, Daly City, El Cerrito North, Rockridge, Walnut Creek, Lake Merritt, No. Oakland
BART Contract No. #155V-120
Bids: April 8, 2014 @ 2 pm
SUBCONTRACTING GOAL – MBE-23% / WBE -12%

Proven Management, Inc.
712 Sansome Street, San Francisco, CA 94111-1704
Phone: 415-421-9500 • Fax: 415-421-9600

Trades include but not limited to – Selective Demolition; Concrete Restoration; Portland Cement Concrete; Rebar; Unit Masonry Restoration; Metal Welding; Structural Steel Framing; Cold-Formed Metal Framing; Metal Fabrications; Flashing & Sheet Metal; Joint Protection; Acoustical Panel Ceilings; Painting; Electric Traction Elevators; Fire Suppression Standpipe; Wet-Pipe Sprinkler System; Low & Medium Voltage Wires & Cables; Lighting; Public Address System; Fire Protection & Alarm System – Earthwork – CCTV Concrete Paving – Pavement Markings – Chain Link Fences & Gates, etc.

PMI will provide assistance in obtaining necessary bonding, insurance, equipment, supplies, materials or other related services. 100% Payment & Performance bonds will be required from a single, Treasury-listed surety company subject to PMI's approval. PMI will pay bond premium up to 1.5%. Subcontractors awarded on any project will be on PMI's standard form for subcontract without any modifications. For questions or assistance required on the above, please call.

We are an Equal Opportunity Employer

Requests proposals/quotes from all qualified and certified DBE/MBE/WBE/SBE subcontractors, suppliers, and truckers for the following project:

**SACRAMENTO CITY COLLEGE
PEDESTRIAN / BICYCLE BRIDGE PROJECT**
City of Sacramento Project #T15065700 / Federal Aid
Project #STPL-5002(147)
Bids: April 9, 2014 @ 2PM
DBE Participation Goal – 5%

Proven Management, Inc.
712 Sansome Street, San Francisco, CA 94111-1704
Phone: 415-421-9500 • Fax: 415-421-9600

100% Payment & Performance bonds will be required from a single, Treasury-listed surety company subject to PMI's approval. PMI will pay bond premium up to 1.5%. Subcontractors awarded on any project will be on PMI's standard form for subcontract without any modifications. For questions or assistance required on the above, please call.

We are an Equal Opportunity Employer

Bid Requests from Certified SBE Subcontractors and Suppliers for SHORING only.
HUNTER'S POINT SHIPYARD PHASE I, BLOCK 49
This is a SFRA project with construction workforce and prevailing wage requirements.

Hunter's Point Shipyard
350 Friedell Street
San Francisco, CA 94124
Bid Date: 4/21/14 @ 2 PM

Voluntary Pre-bid Meeting on 4/3/14 at 10 AM at Construction Assistance Program Trailer located at 690 Hudson Ave., Trailer "B", San Francisco, CA 94124.

CAHILL CONTRACTORS, INC.
Contact: Julie Park
estimating@cahill-sf.com, (415) 986-0600.

Looking for
Subcontractors, Vendors,
and Suppliers?

Advertise your Sub-Bid Requests
in the Small Business Exchange.

With a monthly readership
of 75,000,
SBE reaches a diverse
audience, cutting across ethnic
and gender lines as well as
traditional industry segments.



Call 1-800-800-8534
or visit us at www.sbeinc.com

**Candlestick Point in San Francisco
Opportunity to Perform MATERIAL MANAGE-
MENT / FEASIBILITY STUDIES
during the development of CANDLESTICK
POINT in San Francisco.**

Lennar Urban is requesting qualified, interested construction firms to respond to a public request for proposals to perform **MATERIAL MANAGEMENT / FEASIBILITY STUDIES for Candlestick Point Redevelopment**

For more information, please visit:
<http://mission.sfgov.org/OCABidPublication/BidDetail.aspx?K=7761>

The Successor to the San Francisco Redevelopment Agency (SFRA) has established the 50% Small Business Enterprise (SBE) Participation goal for Construction Subcontracting.

Respondents are encouraged to check this website regularly for updates.

Pre-Bid Coordination Meeting and Job Walk: **March 12th at 10:00 AM**

LENNAR URBAN
One California Street, Suite 2700
San Francisco, CA 94111

Proposals must be submitted by
April 1, 2014 @ 2:00 PM (PST).

SKANSKA

Sub-Bids Requested From Qualified DBE Subcontractors & Suppliers

**Cold Plane Overlay, Ludlow
Caltrans Contract No.: 08-0K2804
District 08 on Route 40**

DBE Goal: 5%

Bid Date: April 10, 2014 – 2:00PM

Skanska is interested in soliciting in Good Faith all subcontractors as well as certified DBE companies for this project. All interested subcontractors, please indicate all lower tier DBE participation offered on your quotation as it will be evaluated with your price. Please call if we can assist you in obtaining bonding, lines of credit, insurance, necessary equipment, materials and/or supplies. Skanska will also review breaking out scope packages and adjusting schedules to help permit maximum participation.

Plans and Specifications are available for view at our main office in Riverside or on the Caltrans website: http://www.dot.ca.gov/hq/esc/oe/weekly_ads/index.php

Quotes requested for contractors, suppliers and service providers include, but are not limited to: Construction Site Management, Storm Water Pollution Plan, Street Sweeping, Construction Area Signs, Traffic Control System, Temporary Pavement Marking, Temporary Traffic Stripe, Portable Changeable Message Signs, Metal Beam Guard Railing, Cold Plane Asphalt Concrete Pavement, Fiber Rolls, Hot Mix Asphalt, Place Hot Mix Asphalt Dike, Tack Coat, Terminal System, Thermoplastic Pavement Marking, Thermoplastic Traffic Strip, Paint Traffic Stripe, Pavement Marker, Asphalt Rubber Binder, Minor Concrete (Minor Structure), Biologist, Inertial Profiler, Shoulder Rumble Strip.

Subcontracting Requirements: Skanska's insurance requirements are Commercial General Liability (GL): \$1M ea. occ., \$1M personal injury, \$2M products & completed operations agg. and general agg.; \$1M Auto Liability; \$5M Excess/Umbrella and \$1M Workers Comp. Endorsements and waivers required are the Additional Insured End., Primary Wording End., and a Waiver of Subrogation (GL & WC). Other insurance requirements may be necessary per scope. Subcontractors may be required to furnish performance and payment bonds in the full amount of their subcontract by an admitted surety and subject to approval by Skanska. Skanska will pay bond premium up to 1%. Quotations must be valid for the same duration as specified by the Owner for contract award. Conditions or exceptions in Subcontractor's quote are expressly rejected unless accepted in writing. Skanska is signatory to the Operating Engineers, Laborers, Cement Masons, Carpenters Unions and Teamsters. Subcontractors must provide weekly, one original and one copy of all certified payrolls, including non-performance and fringe benefit statements if required by law or by the Prime Contract. Subcontractor scope (including any conditions or exceptions) is required 24 hours prior to bid deadline to allow proper evaluation.

Skanska is an Equal Opportunity Employer
Skanska Estimating Dept: 1995 Agua Mansa Rd,
Riverside, CA 92509
Ph: (951) 684-5360, Fax: (951) 788-2449
Email: joe.sidor@skanska.com



CONTRACTING

OPPORTUNITIES

NOTE: FOR BIDS NATIONWIDE PLEASE VISIT OUR WEBSITE DIRECT LINK: http://www.sbeinc.com/database/bid_database/

These are samples of bid opportunities from federal, state and local jurisdictions in 4 categories: Construction, Architecture/Engineering, Business Services and Commodities. All are available in electronic format.

Northern CA Construction Bids

SAN FRANCISCO COUNTY

JOB ORDER CONTRACT

1st reported in SBE: 2/20/14 Last changed: 3/27/14

Location: San Francisco, CA

Date: 4/14/14 3:00PM

Bid Date Extended from: 3/14/14

Ref#: 1273

Prebid Conf: 2/20/14 3:00PM

Description available through electronic services.

License Reqd: B

Owner: San Francisco C&Co, Latha Ramadass,

(415)701-5663, Fax (415)701-4300

jocfederal2014@sfmta.com

GROUNDWATER SUPPLY PIPELINE

1st reported in SBE: 3/27/14

Location: San Francisco, CA

Date: 4/17/14 2:00PM

Ref#: WD-2622

Prebid Conf: 3/25/14 10:00AM

Description available through electronic services.

Duration: 505 calendar days License Reqd: B

Estimate: \$12,000,000 - \$13,000,000

Owner: San Francisco C&Co, Hadas Rivera-Weiss,

(415)551-4814

Goals: 10% LBE

SAN MATEO COUNTY

RECONSTRUCT OVERCROSSING, RETAINING WALL

1st reported in SBE: 2/27/14

Location: San Mateo, CA

Date: 4/15/14

Ref#: 04-235844

Description available through electronic services.

License Reqd: A

Estimate: \$44,252,000 - \$44,252,000

Owner: CA TRANSPORTATION, DEPART, DENISE

SILVAS,

(916)227-6293

E:MAIL DENISE_SILVAS@DOT.CA.GOV

SHASTA COUNTY

CONSTRUCTION OF A WATER STORAGE TANK AT

1st reported in SBE: 3/06/14

Location: Montgomery Creek, CA

Date: 4/14/14

Bid Date Extended from: 3/07/14

Ref#: 14-235-SOL-00006

Description available through electronic services.

Owner: Department of Health and, 650 Capitol Mall,

Montgomery Creek, CA, 95814, Michael P Hodahkwen

SIC: 237110

michael.hodahkwen@ihs.gov

SBSA

CONSTRUCTION OF A WATER DISTRIBUTION SYS

1st reported in SBE: 3/06/14

Location: Montgomery Creek, CA

Date: 4/14/14

Bid Date Extended from: 3/07/14

Ref#: 14-235-SOL-00007

Description available through electronic services.

Owner: Department of Health and, 650 Capitol Mall,

Montgomery Creek, CA, 95814, Michael P Hodahkwen

SIC: 237110

michael.hodahkwen@ihs.gov

SBSA

SONOMA COUNTY

VARIOUS PUBLIC WORKS PROJECTS

1st reported in SBE: 12/05/13

Location: Sonoma, CA

Date: 6/30/14

Ref#: 20132014

Description available through electronic services.

Owner: CA CSU SONOMA STATE, JENIFER CRIST,

(707)664-3102

E:MAIL JENIFER.CRIST@SONOMA.EDU

TEHAMA COUNTY

ASPHALT RUBBER OVERLAY WITH DIG OUTS

1st reported in SBE: 12/12/13

Location: Tehama, CA

Date: 1/07/20

Ref#: 02-4G1104

Description available through electronic services.

License Reqd: A

Estimate: \$1,610,000 - \$1,610,000

Owner: CA TRANSPORTATION, DEPART, DENISE

SILVAS,

(916)227-6293

E:MAIL DENISE_SILVAS@DOT.CA.GOV

Events

Industry Forum for Design-Build Contract

April 8, 2014 10:00 am – 12:00 pm

Visalia Convention Center

303 E Acequia Ave., Visalia, CA 93291

Pre-Bid Conference for Project and Construction Management Services

April 8, 2014 1:30 am – 3:30 pm

Visalia Convention Center

303 E Acequia Ave., Visalia, CA 93291

Business Advisory Council

April 17, 2014 1:00 pm – 3:00 pm

Los Angeles County Metropolitan Transportation

Authority Metro Board Room

1 Gateway Plaza, Los Angeles, CA 90012

1st Annual WOMEN IN CONSTRUCTION EXPO FRIDAY, MAY 16, 2014

The 1st Annual Women in Construction Expo "Expo" is the first of its kind in Northern California and will empower women in the trade by providing tips on how to work a room, navigate the City's bidding process, network, and establish partnerships to develop contracting opportunities. The SFPUC's Small Firm Advisory Committee and the Contracting Monitoring Division (CMD) hosts of the Expo are working in collaboration with the National Association of Women in Construction and Women's Business Enterprise National Council.

EVENT LOCATION: Hotel Whitcomb

Registration opens - 7:30 a.m.

Light Breakfast Commences - 8:00 a.m. - 8:30 a.m.

Program Commences - 8:30 a.m. - 10:00 a.m.

Program Concludes at 10:00 a.m.

BREAKOUT SESSIONS

Morning sessions 10:00 a.m. - 12 noon

1. How to Work a Room - Lee Cunningham, Owner of BT Metals and Fabrications
2. Estimating and prequalification – Webcor, Turner, and Flat Iron

Lunch 12 noon - 1:00 p.m.

keynote speaker Naomi Kelly, City Administrator, San Francisco

Afternoon sessions 1:00 p.m. - 3:00 p.m.

3. Doing Business with the City:

- San Francisco Public Utilities Commission
- Contracting Monitoring Division
- Office of Labor Standards Enforcement
- Office of Economic Workforce and Development
- Department of Public Works
- San Francisco Municipal Transit Agency

4. Bonding, financing and insurance - Merriwether and Williams and Galina Insurance

Southern CA Construction Bids

LOS ANGELES COUNTY

SOURCES SOUGHT-FY 14 F-35 SQUADRON OPERA

1st reported in SBE: 9/12/13

Location: Los Angeles, CA

Date: 4/21/14

Bid Date Extended from: 3/14/13

Ref#: W912PL-13-S-0006

Description available through electronic services.

Owner: Department of the Army, P.O. Box 532711,

Los Angeles, CA, 90053-2325, Sandy Oquita

SIC: 236220

SAN DIEGO COUNTY

5E REMODEL - HVAC UPGRADE/REPLACEMENT

1st reported in SBE: 3/13/14

Location: San Diego, CA

Date: 4/16/14

Bid Date Extended from: 1/23/14

Ref#: VA26214B0401

Description available through electronic services.

Owner: Department of Veterans Af, Suite 600, San Diego,

CA, 90815, Steven J. Covell

SIC: 238220